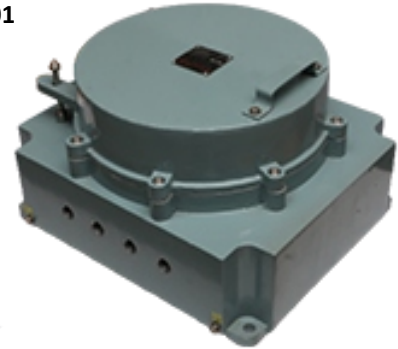




DATA SHEET FOR FLP JUNCTION BOX

TECHNICAL DATA:

- PRODUCT : CAT. NO. – RCP/2C/2022
- ENCLOSURE : FLAME PROOF (EX-d), Gas Group IIA , IIB , IIC
As per IS/IEC 60079-1 : 2014
- PROTECTION : WEATHER PROOF IP – 66 AS PER IS/IEC 60529:2001
(Reaffirmed 2014)
- AREA CLASSIFICATION : Ex db IIC T6 Gb (EX tb / tc IIC T85 C Db/Dc
(ZONE 1 & 2 & Zone 21 & 22)
- CERTIFICATION : CIMFR, BIS, PESO
- TEMPERATURE CLASS : T 6
- MATERIAL : DIE CAST ALUMINIUM ALLOY
- FINISH : EPOXY POWDER COATED SHADE AS PER IS :5
- EARTHING : 1 No INTERNAL & 2 No's EXTERNAL
- HARDWARE : STAINLESS STEEL
- GASKET : O' RING ENDLESS GASKET NEOPRENE / SILICON
- NAME PLATE : SS NAME PLATE CUM WARNING PLATE
- ENTRIES : AS PER CUSTOMER REQRMENT
- TERMINAL : COMBINATION AS PER CUSTOMER REQUIRMENT
- VOLTAGE : 415 V AC



OPTIONS

SR.NO	PARTICULAR	OPTIONS
1.	MATERIAL OF CONSTRUCTION	STAINLESS STEEL
2.	GLAND/PLUG	BRASS / SS / ALUMINIUM
3.	COLOUR SHADE	631, 632, 355, 7031, 7032 etc.
4.	CANOPY	G.I /FRP
5.	INTERNAL COMPONENTS	CU/AL. BUSBAR/SWITCHGEARS COMPONENTS etc..

SELECTION CHART

SR NO	INTERNAL SIZE	L NO TERMINAL (2.5 sq mm) (MAX)	MODE
1.	430mm X 430mm X 140mm To 290mm	100 Nos	B1
2.	355mm X 355mm X 110mm To 250mm	60 Nos	B3
3.	360mm X 300mm X 110mm To 250mm	60 Nos	B4
4.	325mm X 300mm X 110mm To 250mm	60 Nos	B5
5.	300mm X 250mm X 110mm To 250mm	40 Nos	B6
6.	250mm X 200mm x 110mm To 210mm	45 Nos	B7
7.	525mm X 525mm X 190mm	200 Nos	B8

